

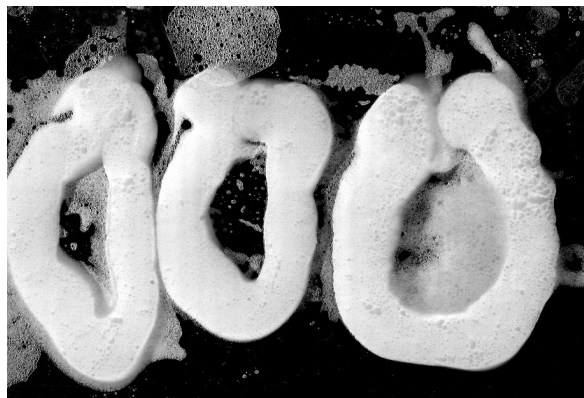
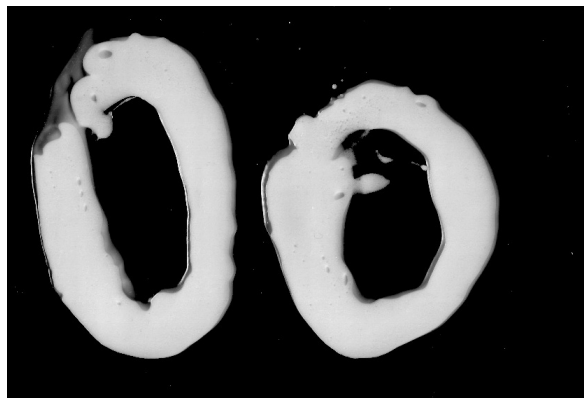
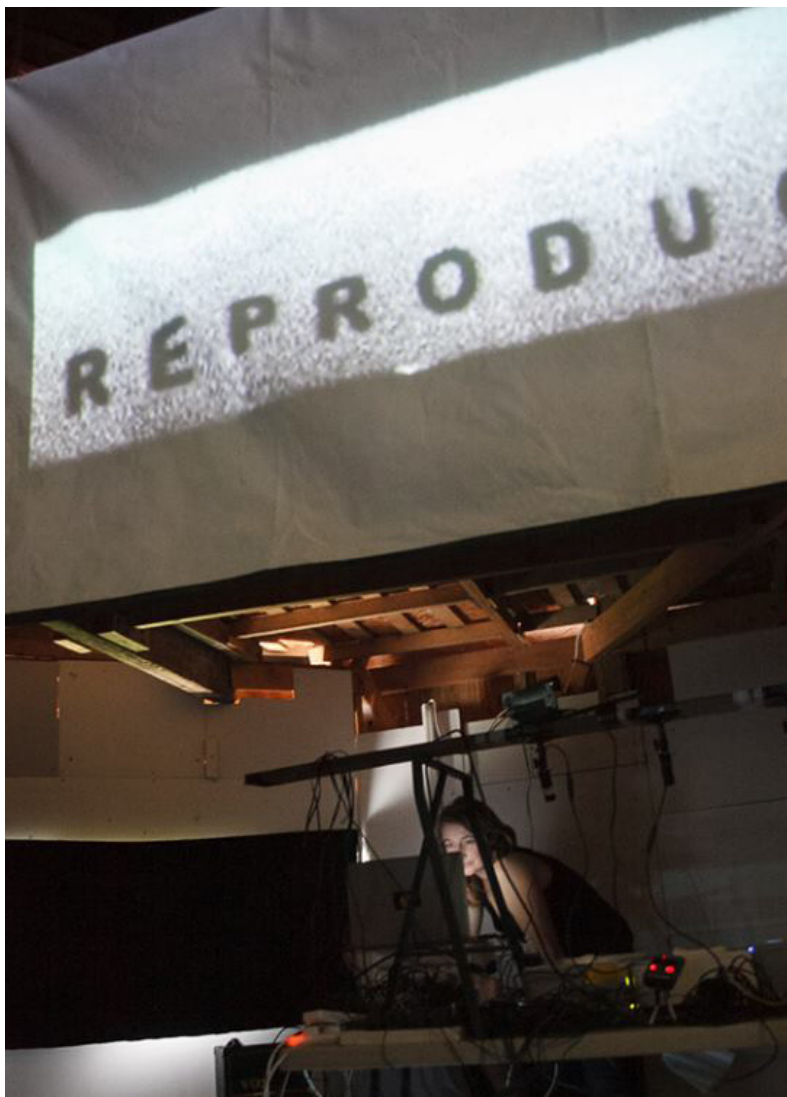
**Lucy Woodhouse**  
**Selected works**

I'm interested in the systems through which social experience is presented transformed and consumed. This involves making work that is both inspired and created by exploring forms of locality and connectivity.

Similar in approach to an ethnographer, journalist or documentary filmmaker I gather information through various specific means - such as conversations, questionnaires, purchased items, direct observation, photography or other. I then look to transform these actions in interesting ways so that the everyday is reconfigured into something strange and atmospheric. Often I'll engage directly with places that I find of interest and look to work with the people, technologies and or products that I find there. Sites have included Ebay, Google images, local street markets, P.C World or passport photographs in Snappy Snaps.

Sometimes I focus on just the technology itself, using it as a tool through which information can be passed and shaped with an interest in the inherent transformative qualities of the process and the results 'it' produces. For example this can include using scanners, webcams, CCTV equipment and live visual or live sound editing software and hardware.

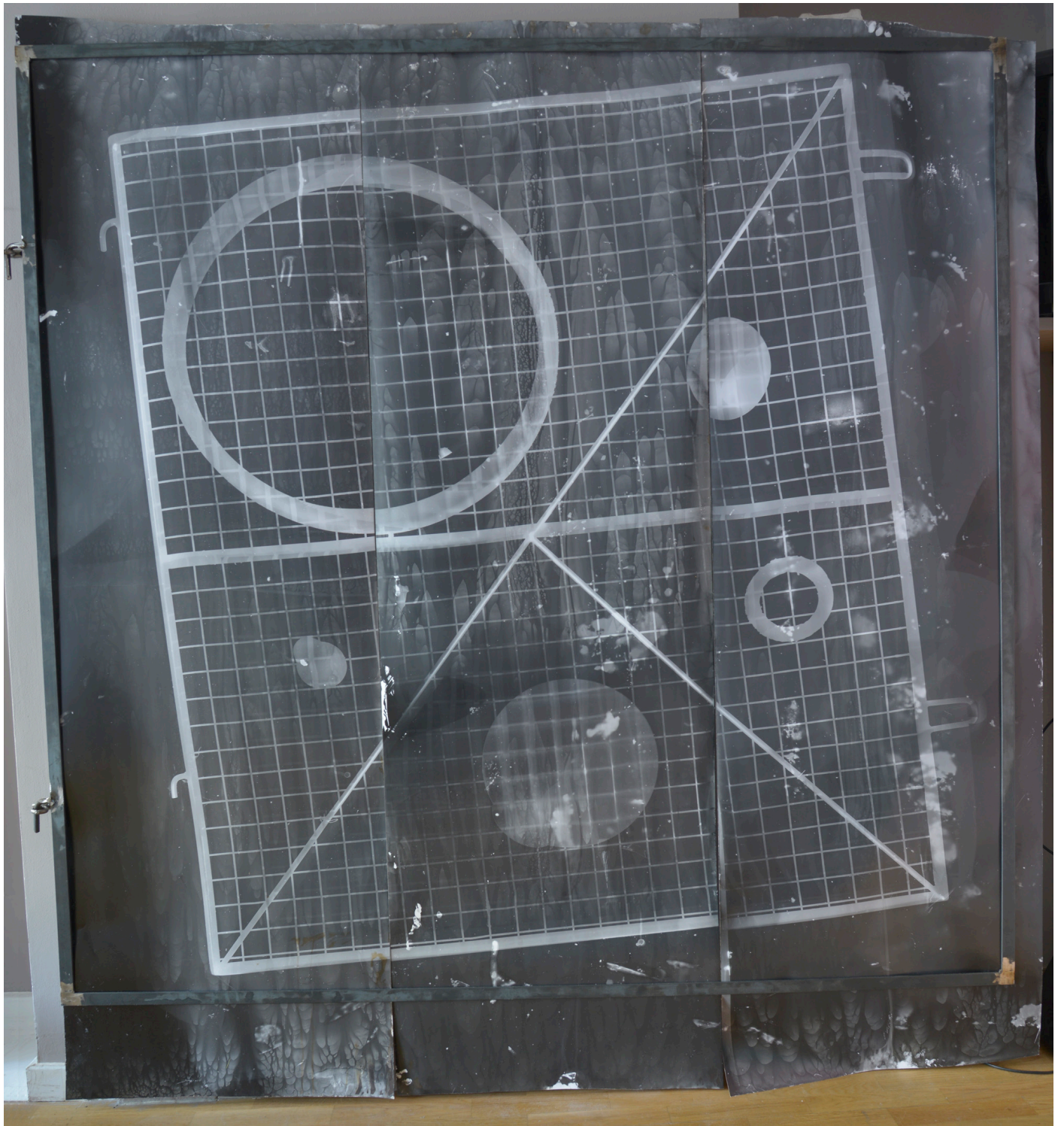
I work across a variety of media including online technologies, live broadcast, photography, digital media, sculpture and performance.



### **Reproduce (Experimental Inkjet), 2014**

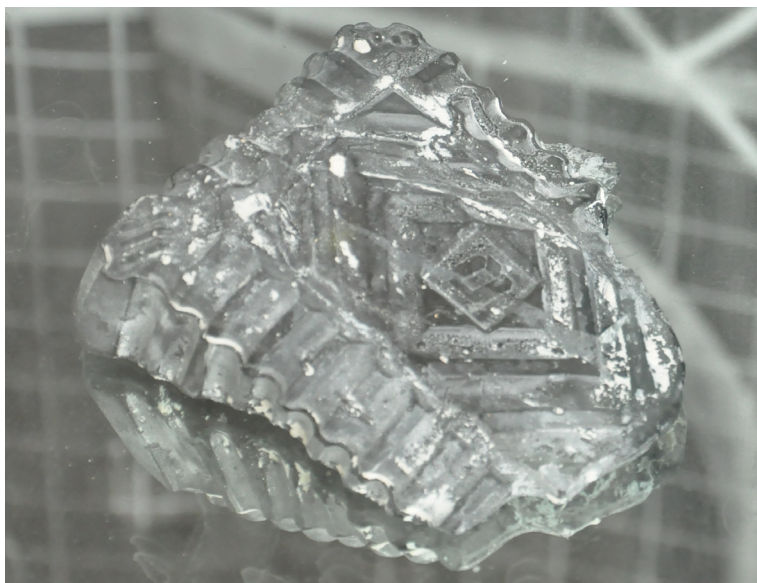
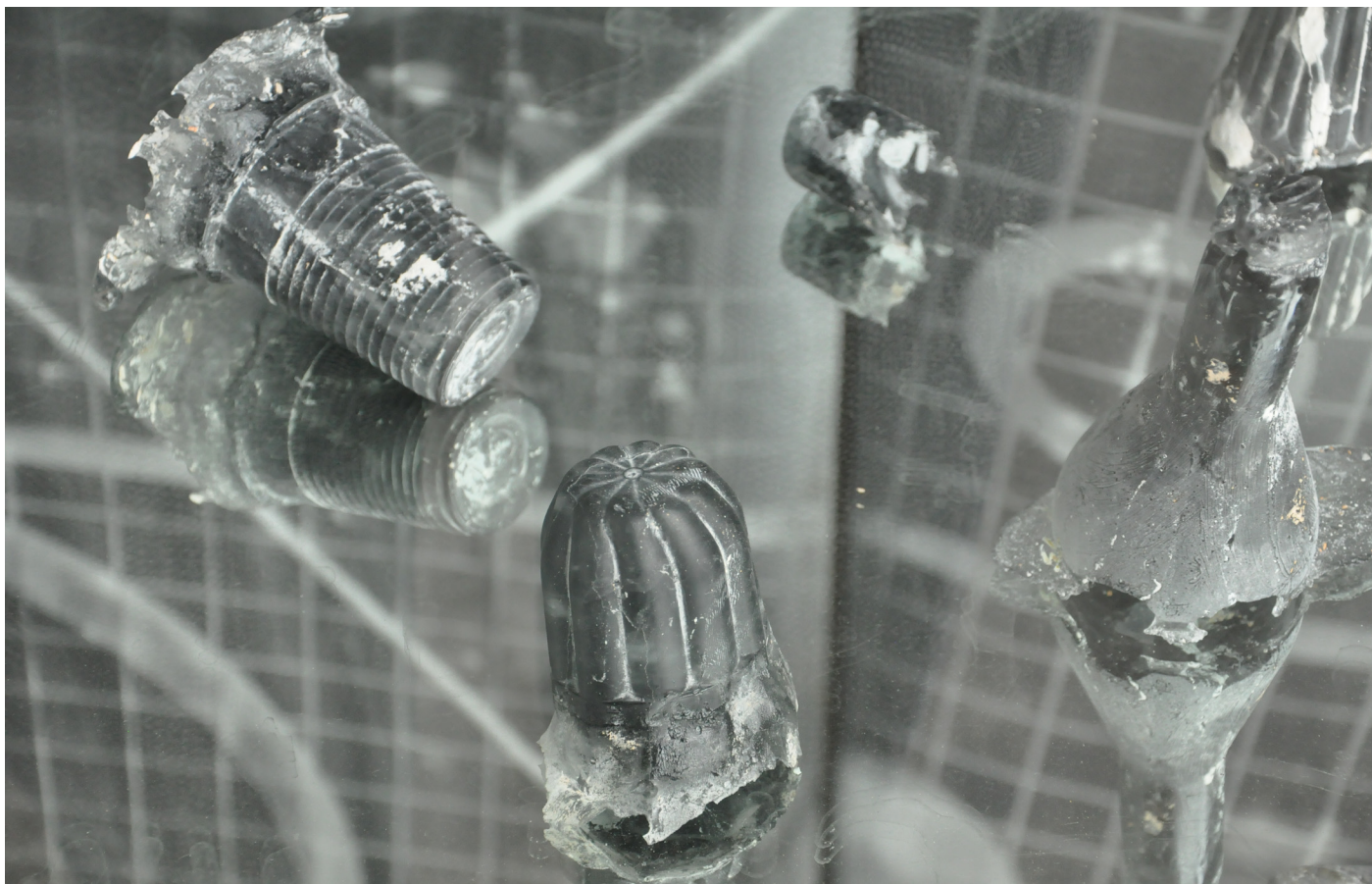
45-minute performance featuring scanners, CCTV cameras, hair mousse, live sound and image projection

Inspired by the 80's cult film *THEY LIVE* by John Carpenter, Lucy Woodhouse has created a makeshift installation using everyday consumer technologies such as scanners, TV's, webcams and CCTV cameras, through which a live transmission is projected. Foam based beauty products are squirted onto the scanners to form temporary shapes that remind us of bodily fluids such as cum or spit. These shapes are then projected live where combined they form the zero's and ones of the normally invisible language of binary code to spell out the word *REPRODUCE* - a quote from the film. Distorted sounds of birdsong, rain and electronic devices are mixed with live transmitted sound to give the sense of an 'electronic nature' and an eerie other worldly feel.

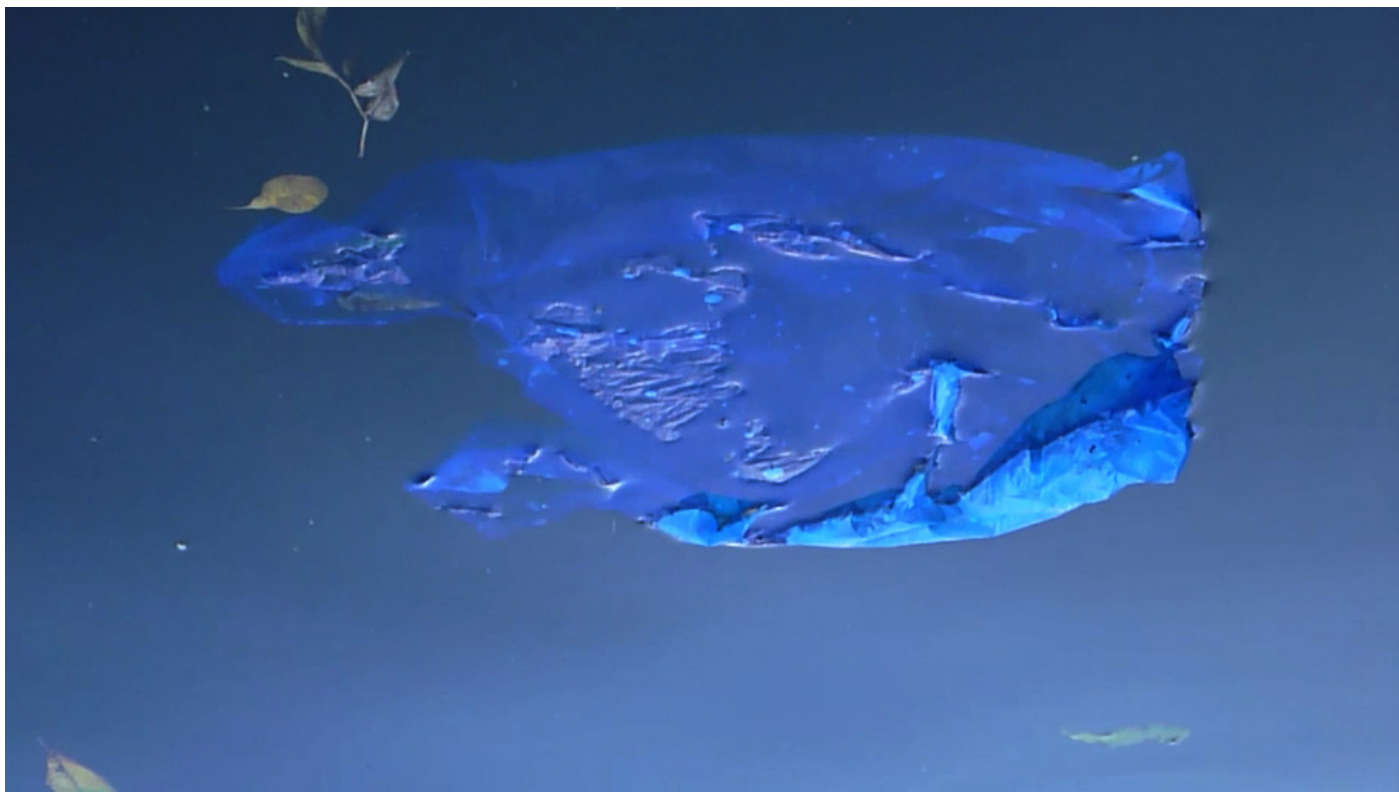


**Zilch, 2014**

Black and white photogram, steel frame  
200 x 200cm



**Zilch, 2014**  
21 pieces of cast CRT TV glass  
Dimensions variable

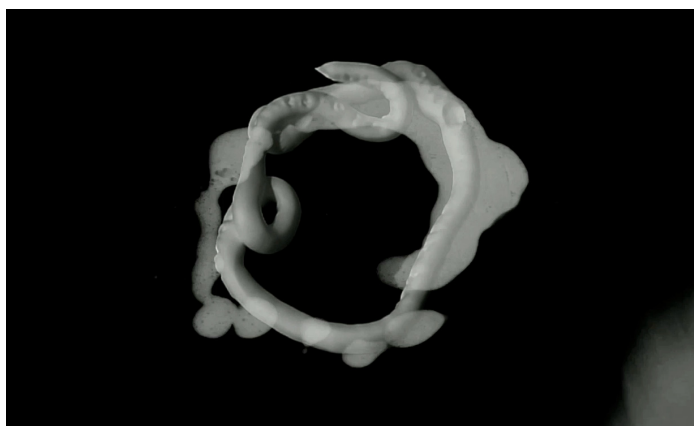
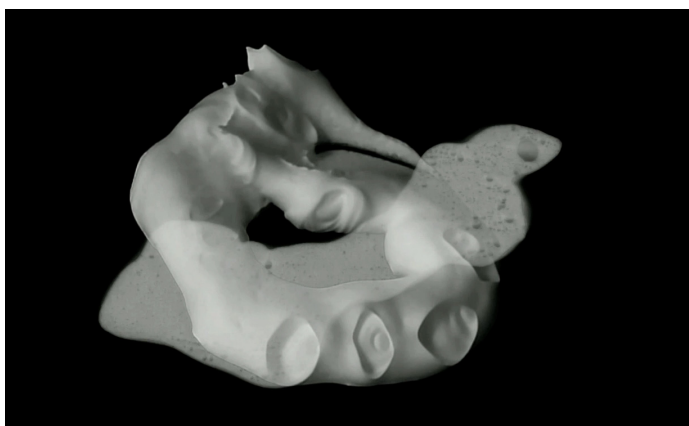
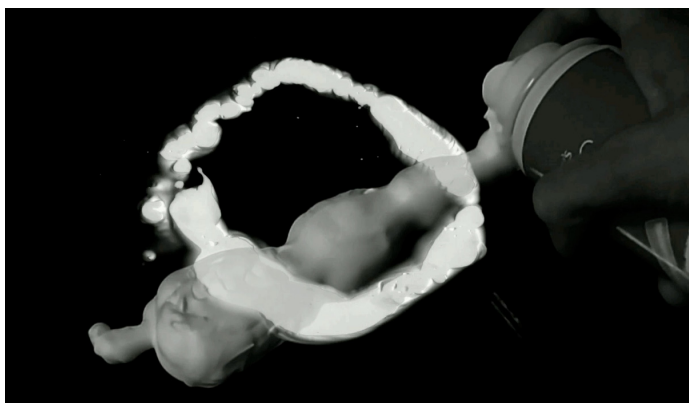
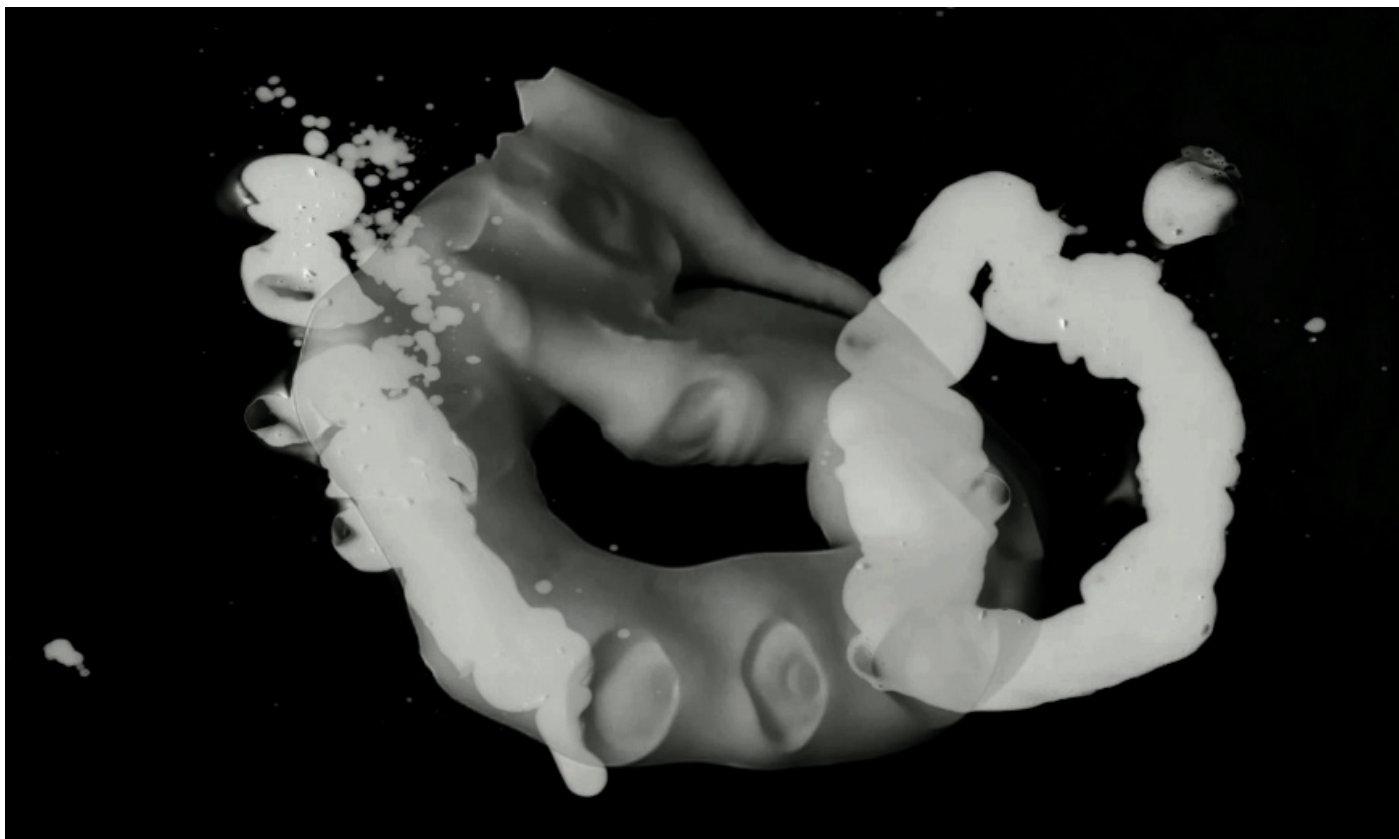


Float, 2014  
2 minute video loop



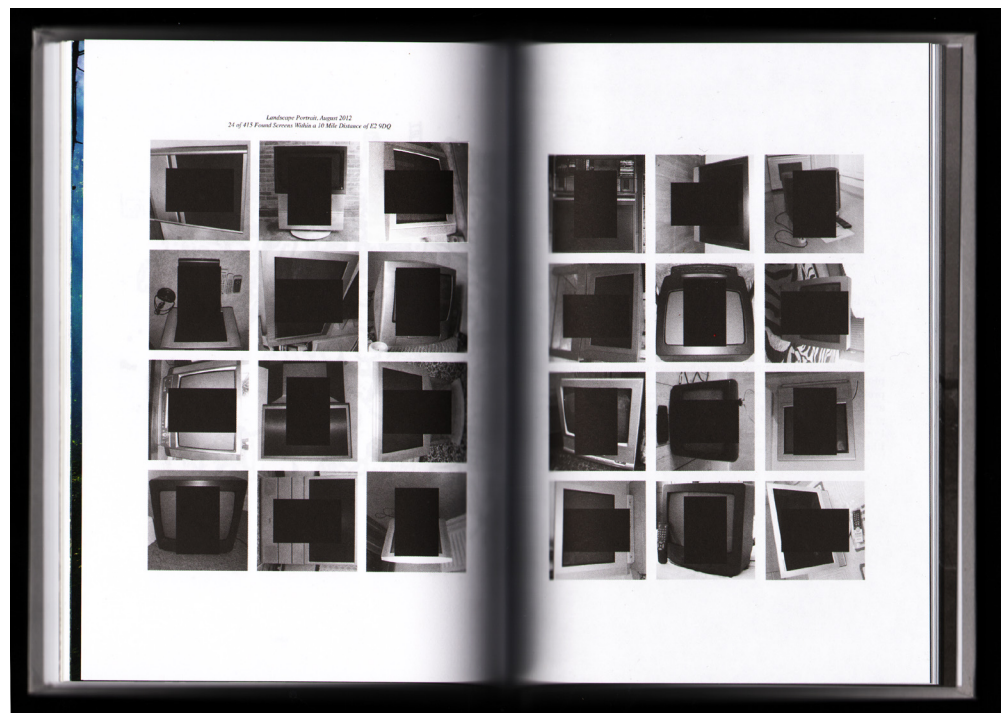
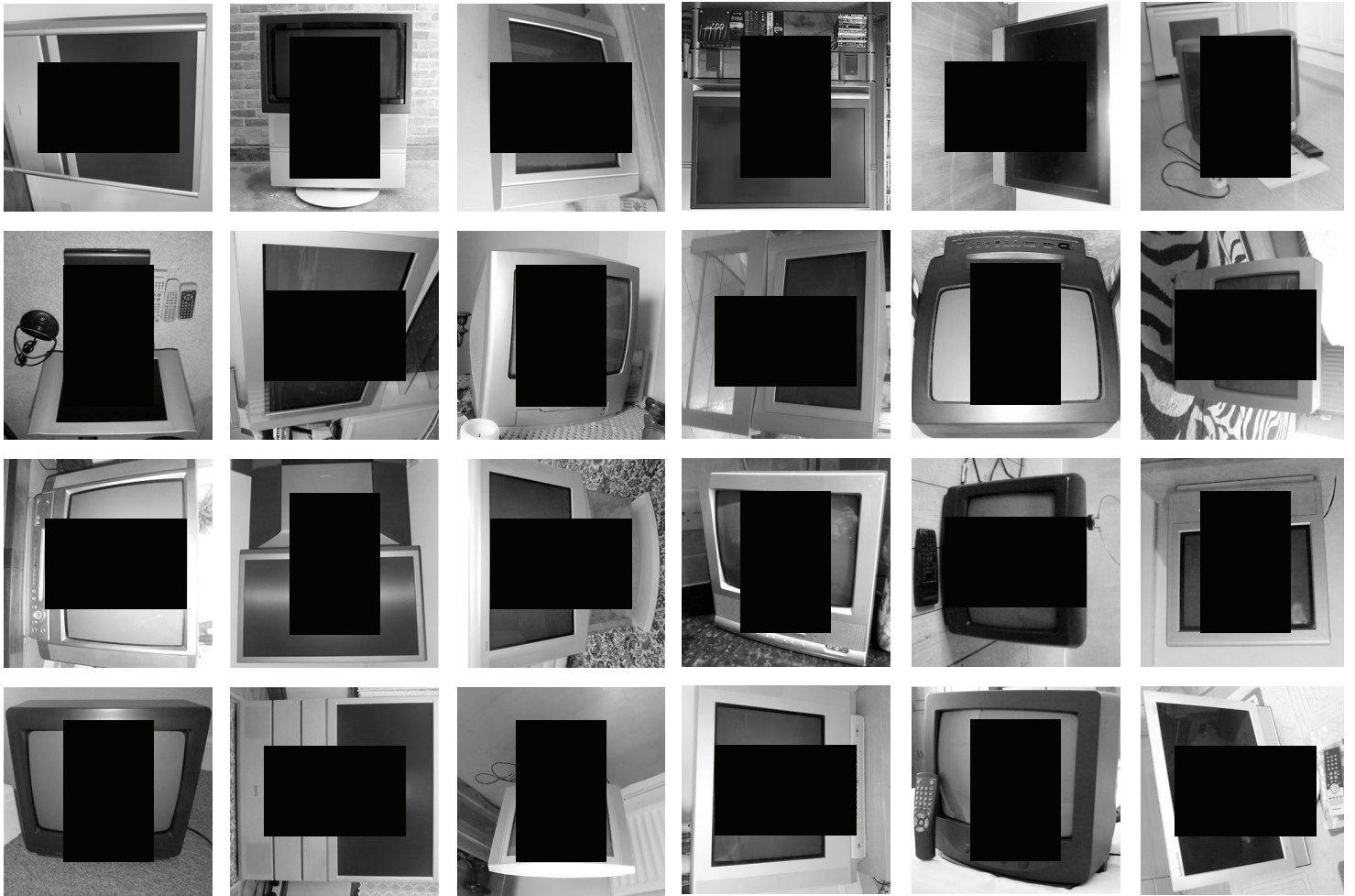
**World Brain Data (Experimental Inkjet), 2013**  
**40 minute performance**

Lucy Woodhouse's performance *World Brain Data (Experimental Inkjet)*, uses printers and scanners to create live visuals and unique prints based on the H.G. Wells book 'World Brain'. The scans of the book show it as either open or closed to represent the zeros and ones that spell out the word 'Google' in binary code. Here she draws parallels to the private company Google's current ambition to scan every book in the world. Published in 1938 the book *World Brain* first presented the idea of universal access to all human knowledge and explored its various implications.



**Binary, 2013**  
2 minute video loop

*Landscape Portrait, August 2012*  
24 of 415 Found Screens Within a 10 Mile Distance of E2 9DQ



**Landscape, Portrait, 2013**

24 of 415 screens within a 10 mile radius of E2 9DQ  
AB by Gabriele De Santis, Published by Cura





2012 (Image Not Available), 2012

Black and white photograms made using CRT TV screens just before the switch off of the analogue TV signal



**Transition Transmission, 2012**

12 black and white photograms made during the Transition Transmission 2012 performance as part of the Invites exhibition at the Zabłudowicz Collection



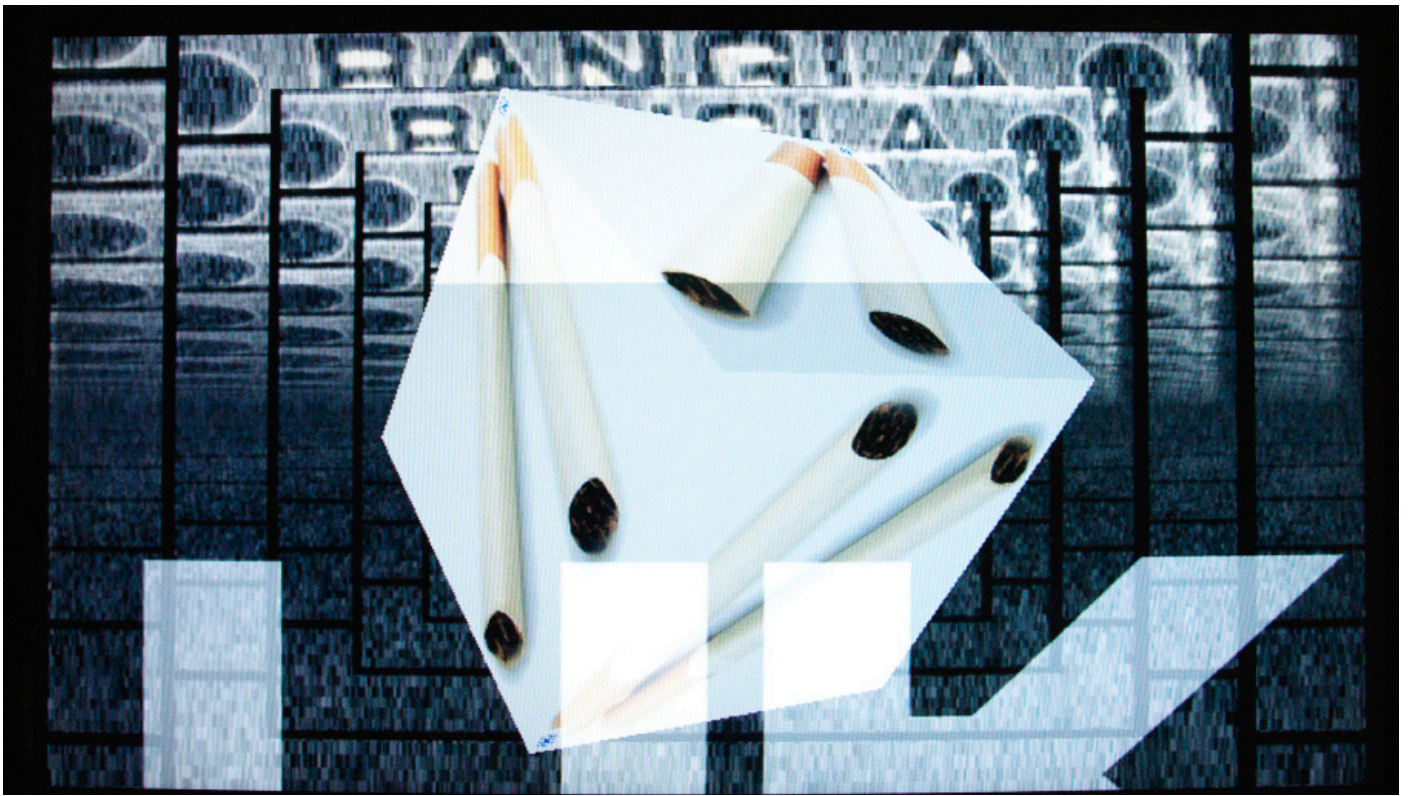
**Local Global Transition Transmission Connection Centre, 2012**

Computer, monitors, projectors, live web feed, CCTV cameras & broadcast equipment  
Dimensions variable

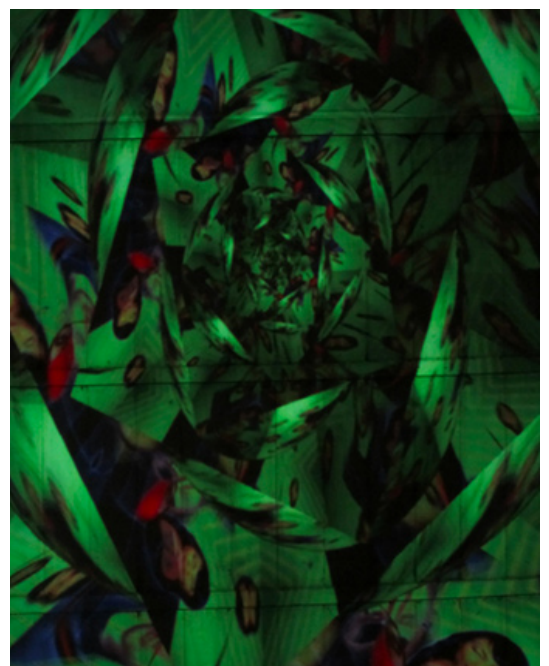
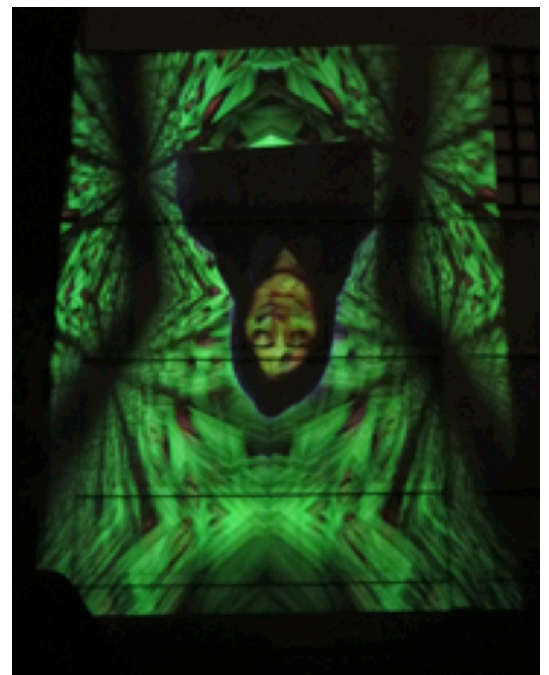


**Market Forces (Whitechapel Trade, )2012**  
Html & animated gifs  
Dimensions variable

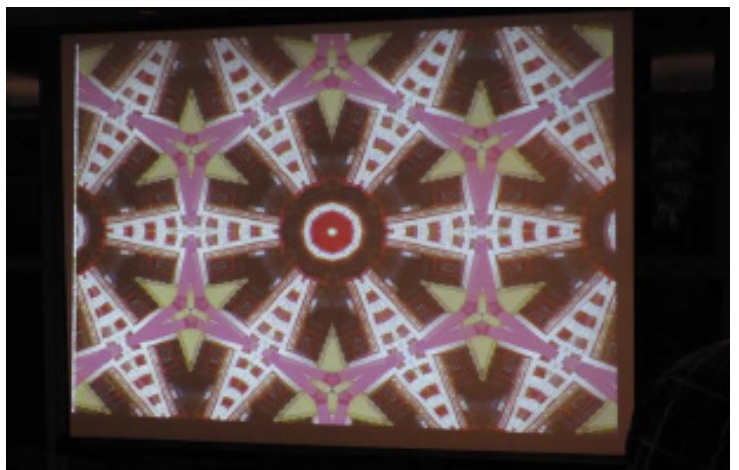
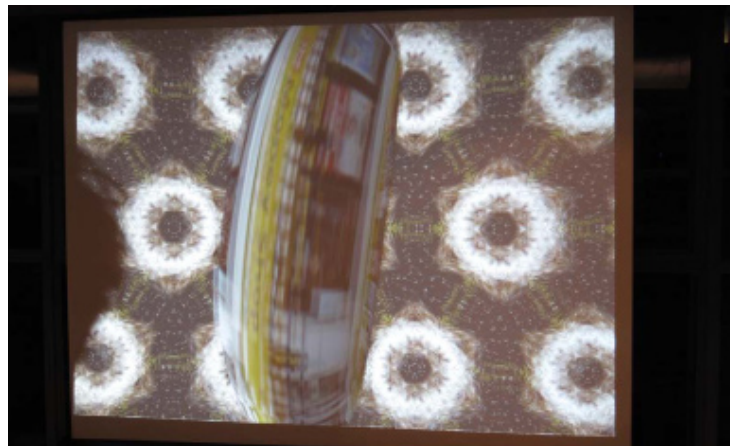
Gif's created from photographs of market trader's hands in Whitechapel



**Espèces d'espaces, 2011,**  
Multimedia installation based on Bethnal Green Road  
French Riviera Gallery



I Cannot See The [...] Caught In The Forest, 2011  
Photographic work and 20 minute VJ DJ set



**The Bethnal Green Fresh Mix, 2010**

Live 20 minute VJ DJ performance at the Whitechapel Gallery featuring the favourite tracks of Bethnal Green Road shop workers along with VJ'd images of the shop fronts